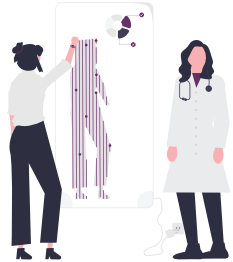


Moral issue

AI - Monitoring in the hospital



Intention

Patients lying in bed in the hospital are being monitored by artificial intelligence. The software checks vital signs and combines them with camera images. If the AI determines that something is amiss, it issues an alert to the staff to investigate.

Explanation

AI recognizes patterns in vast amounts of data. By combining various data, including patient information, medical history, illness, vital signs, movement, and facial expressions, the AI can detect early warning signals. The system complies with all privacy regulations and, according to the supplier, is correct in 98% of cases.